

NOTE: HELLO KOALAS 5 & 36 HAVE MOVED TO 11 HELLO KOALAS GIFT SHOP

**SAVE THE DATES!**

**HELLOKOALAS FESTIVAL**  
25-26 Sep 2021 [www.hellokoalas.com/festival](http://www.hellokoalas.com/festival)

HELLO KOALAS ON TOUR  
AUSTRALIAN BOTANIC GARDEN APRIL 2021  
Mount Annan, Campbelltown, 1-30 April 2021

PORT MACQUARIE-HASTINGS BICENTENARY  
10-18 APRIL 2021

**SHARE YOUR SPECIAL HELLO KOALAS MOMENTS WITH US.**

- Facebook: Become a fan on Facebook at Hello Koalas
- Twitter: Follow us on Twitter @Hellokoalas
- Instagram: See great photos on Instagram @Hellokoalas
- TripAdvisor: Share your Experience on TripAdvisor

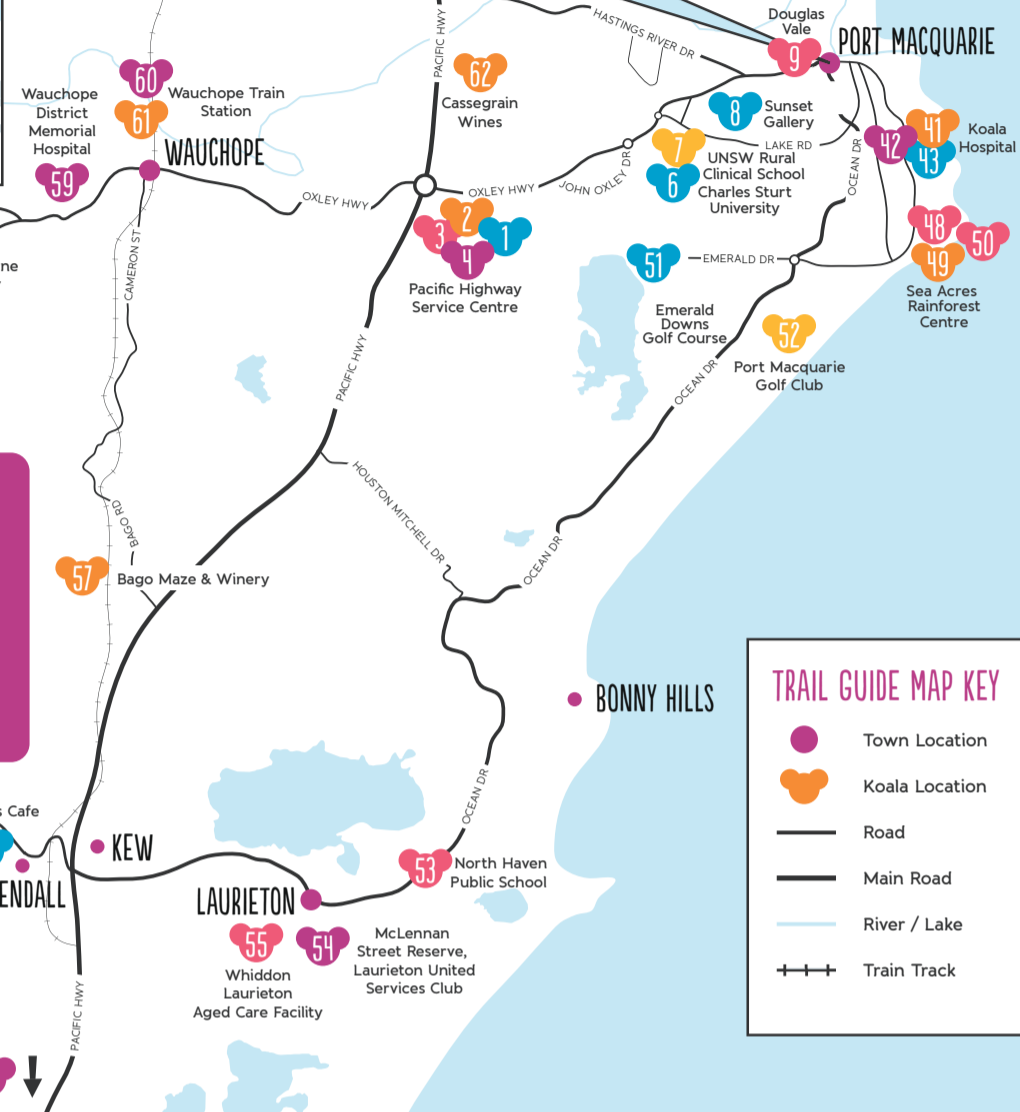
PLEASE CHECK [WWW.HELLOKOALAS.COM](http://WWW.HELLOKOALAS.COM) FOR UPDATES

77+ UNIQUELY DESIGNED AND HAND PAINTED KOALA SCULPTURES IN GREATER PORT MACQUARIE, TAREE, KEMPSEY AND COFFS HARBOUR

66 Sealy Lookout Coffs Harbour  
64 Slim Dusty Centre

KEMPSEY TRAIN STATION

SOME HELLO KOALAS SCULPTURES MAY BE TRAVELLING ON EXHIBITION OR THEIR LOCATIONS MAY CHANGE. PLEASE CHECK [WWW.HELLOKOALAS.COM](http://WWW.HELLOKOALAS.COM) FOR DETAILS



**TRAIL GUIDE MAP KEY**

- Town Location
- Koala Location
- Road
- Main Road
- River / Lake
- Train Track

**HELLOKOALAS MEMORABILIA**

Collect the 2021 Calendar and latest Tea Towel

Visit Hello Koalas Gift Shop, Unit 16, 10 Bellbowrie Street, Port Macquarie (see listing 11, 12, 13 on the map) or purchase online [www.hellokoalas.com](http://www.hellokoalas.com) Enquiries 0416 641 482



**TREASURE HUNT**  
A SEARCH AND RESCUE ADVENTURE  
25TH - 26TH SEPTEMBER 2021  
A Highlight of 5th annual Hello Koalas Festival  
[www.hellokoalas.com/festival](http://www.hellokoalas.com/festival)

SAVE THE DATE!

**HELLOKOALAS on TOUR**

Hello Koalas presents its own band of Wildlife Warriors, spreading the message far and wide that we must care for our koalas and all native fauna and flora.

If your organisation would like to host a promotional exhibition or have our Hello Koalas sculptures visit a special event, or you would like to sponsor a Hello Koalas sculpture on the Trail, please contact Hello Koalas on 0416 641 482 or email [info@hellokoalas.com](mailto:info@hellokoalas.com)



Margret Meagher, Project Director  
Mobile 0416 641 482  
Email [info@hellokoalas.com](mailto:info@hellokoalas.com)

Project Owner and Manager  
ARTS AND HEALTH AUSTRALIA  
Healthy People, Healthy Communities - engaging with the Arts  
[www.artsandhealth.org.au](http://www.artsandhealth.org.au)

Disclaimer: This map is the property of Arts and Health Australia. The map is not to scale and is provided as a guide only to the Hello Koalas Sculpture Trail. Whilst all care has been taken when completing this map, Arts and Health Australia accepts no liability for any inconvenience, damage or injury whatsoever that may occur by reliance on the information provided. Please check the Hello Koalas Sculpture Trail website for regular updates or to download the most current Trail Guide as a pdf - [www.hellokoalas.com](http://www.hellokoalas.com) © Hello Koalas Sculpture Trail. All Rights Reserved. Images and sculpture designs may not be reproduced without permission in writing.

Photography by Lindsay Moller: [www.lindsaymoller.com.au](http://www.lindsaymoller.com.au) Design by [kreativebykr@gmail.com](mailto:kreativebykr@gmail.com)

**SAY HI TO OUR HELLO KOALAS SCULPTURES**



SUMMER 2021

**HELLOKOALAS SCULPTURE TRAIL**

Port Macquarie NSW

Say Hi to Alira and Bindi (Settlement City Shopping Centre), Mack The Surf Lifesaver (McDonalds Settlement City) and Frankie Firefighter (Hello Koalas Gift Shop, Port Macquarie) - pictured above.

77+ HELLO KOALAS SCULPTURES  
77+ UNIQUE ARTIST DESIGNS

**HELLOKOALAS**

Visit our website for more info [www.hellokoalas.com](http://www.hellokoalas.com)  
Join us on Facebook, Follow us on Twitter, Instagram and TripAdvisor



SHOP ONLINE AT [WWW.HELLOKOALAS.COM](http://WWW.HELLOKOALAS.COM)

GATEWAY SERVICE CENTRE, PACIFIC HIGHWAY, PORT MACQUARIE

OCEANIA MR T & KOALA Z WILDLIFE WARRIOR

(KIRALEE) Port Macquarie-Hastings Bicentenary 2021

CHARLES STURT UNIVERSITY (PROF. EUGENE EUCALYPTUS)

UNSW MEDICINE RURAL CLINICAL SCHOOL (DR STU DENT)

SUNSET GALLERY (TULLY THE CELTIC KOALA)

DOUGLAS VALE HISTORIC HOMESTEAD AND VINEYARD (LORD BURRAWAN)

CAR CLEAN PORT MACQUARIE (KOALATRON)

HELLO KOALAS DISPLAY & GIFT SHOP HELLOKOALAS

DONNA'S POOL & SPA CENTRE (STARRY SOUL)

PORT MACQUARIE PANTHERS CLUB (SANDY PAWS & THE MAYOR OF THE KOALA REPUBLIC)

SETTLEMENT CITY SHOPPING CENTRE

MCDONALDS PORT MACQUARIE (MACK THE SURF LIFESAVER)

BAY PARK PLAZA - PIPEWORKS CAFE (WILLOW)

SAILS PORT MACQUARIE (ATHENA & POSEIDON)

SEASALT PORT MACQUARIE (HELLY)

AFFINITY HELICOPTERS & MARINE (KOALASAUROS-MAX)

PERCIVAL PROPERTY (PERCY CROSSLEAF)

HEADSPACE PORT MACQUARIE (MANDY MANDALA KOALA)

CHOP 'N CHILL RESTAURANT (CHI)

GLASSHOUSE ARTS AND VISITOR CENTRE (LADY LOLA THE DANCING KOALA & PK SPARKLES)

URBAN GRAIN BAKERY (DAME KOALA)

FORESTRY CORPORATION OF NSW (FOREST)

HISTORIC COURTHOUSE (GARAGE GIRL & CON KOALA)

RYDGES PORT MACQUARIE (ZIGGY)

HELLO KOALAS GIFT SHOP (MADAME BUTTERFLY)

BELLE PROPERTY PORT MACQUARIE (ASHA THE TREE OF LIFE KOALA)

NSW GOVERNMENT - PREMIER & CABINET (PUZZLES - LOOKING FOR THE KEY TO DEMENTIA)

ABC MID NORTH COAST (BENJAMIN THE RETURN OF THE THYLACINE)

OCEAN BREEZE MOTEL (AUSTRALIANA BELOW THE SURFACE)

PORT MACQUARIE KOALA HOSPITAL

PAGE HIAB SERVICES (LUMPA)

MANTRA THE OBSERVATORY (RETRO RITA)

MID NORTH COAST MARITIME MUSEUM (LACHLAN MACQUARIE)

THE DENNY'S (KOALA NOIR)

CRUSADER KOALA RANGER RILEY FLYING FIFE

EMERALD DOWNS GOLF COURSE (EDE THE GOLFING KOALA)

PORT MACQUARIE GOLF CLUB (AUSTRALIANA DOWNUNDER)

NORTH HAVEN PUBLIC SCHOOL (HAPPY HAVEN)

LAURIETON UNITED SERVICES CLUB (LAURIE)

THE WHIDDON GROUP LAURIETON (OMA - CREATIVE AGEING KOALA)

MISS NELLIE'S CAFE AND FOCUS MAGAZINE (COWALA)

BAGO MAZE & WINERY (BAGO BLOSSOM THE AMAZING KOALA)

GREENBOURNE NURSERY (PRINCESS LASIANDRA)

WAUCHOPE DISTRICT MEMORIAL HOSPITAL (GRANNY SQUARE)

NSW TRAINS WAUCHOPE (CARRAMAR & GUULA)

CASSEGRAIN WINES (FROGGY)

RICARDOES TOMATOES & STRAWBERRIES (BERRY BEAUTIFUL)

SLIM DUSTY CENTRE (NULLA)

NSW TRAINS KEMPSEY (KAS KOALA)

FORESTRY CORPORATION OF NSW (WOODY)

NSW TRAINS TAREE (GUM BLOSSOM)

WESTPAC BANK ("CHIEF" - WESTPAC RESCUE HELICOPTER PILOT)